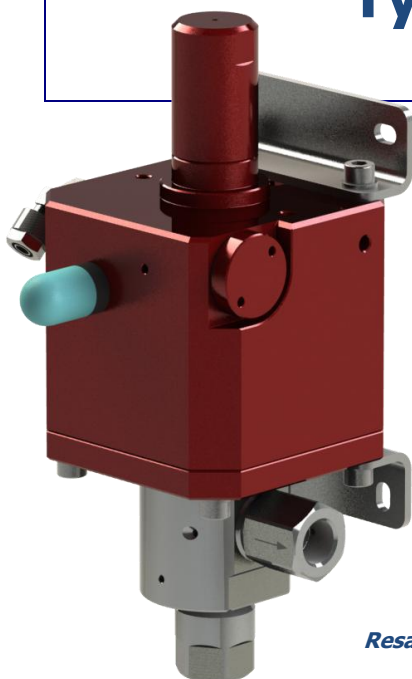


## NEW Resato air-driven mini pump Type P80 up to 2500 bar



*Resato P80 mini pump*

**Resato's new mini pump** is available in four pressure ranges up to 1800 bar at 7 bar air drive pressure and 2500 bar at 10 bar air drive pressure.

### Key Features

- Low noise level
- Inlet and outlet check valve cartridges
- Easy and low-cost maintenance
- Suitable for pressurizing oil, water or other fluids
- Several pressure ranges available
- All parts made of non-corrosive materials.

### Functioning

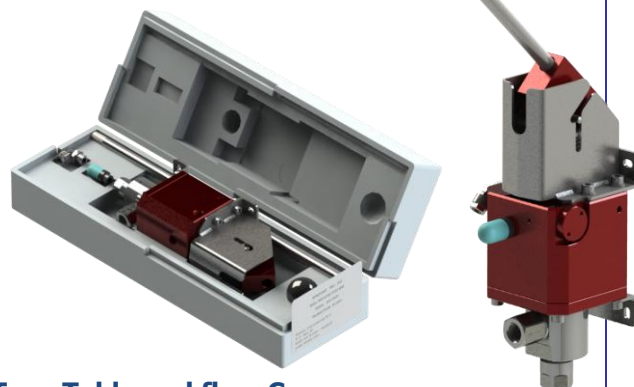
The Resato air driven mini pump has a compact design. It operates on the simple but efficient principle of an automatic reciprocating differential area piston. A relatively large air-operated piston is connected to a smaller high-pressure piston to convert compressed air flow into fluid flow at high pressure. The Resato P80 pump has no mechanical pilot valves and contains inlet and outlet check valve cartridges. As a result, the pump has a low noise level and is easy to maintain.

The Resato mini pump type P80 is manufactured according to European regulations and will be delivered including:

- Operating manual
- Maintenance manual
- Spare parts manual
- Test certificate.

### Option

- Optionally available with hand lever.



### Type Table and flow Curves

- The flow curves, and type table are found at the back of this leaflet.

## RESATO INTERNATIONAL BV

1e Energieweg 13  
P.O. Box 30

NL-9301 LK  
NL-9300 AA

Roden – Holland  
Roden - Holland

Phone: +31 (0) 50 501 6877  
Fax: +31 (0) 50 501 2402

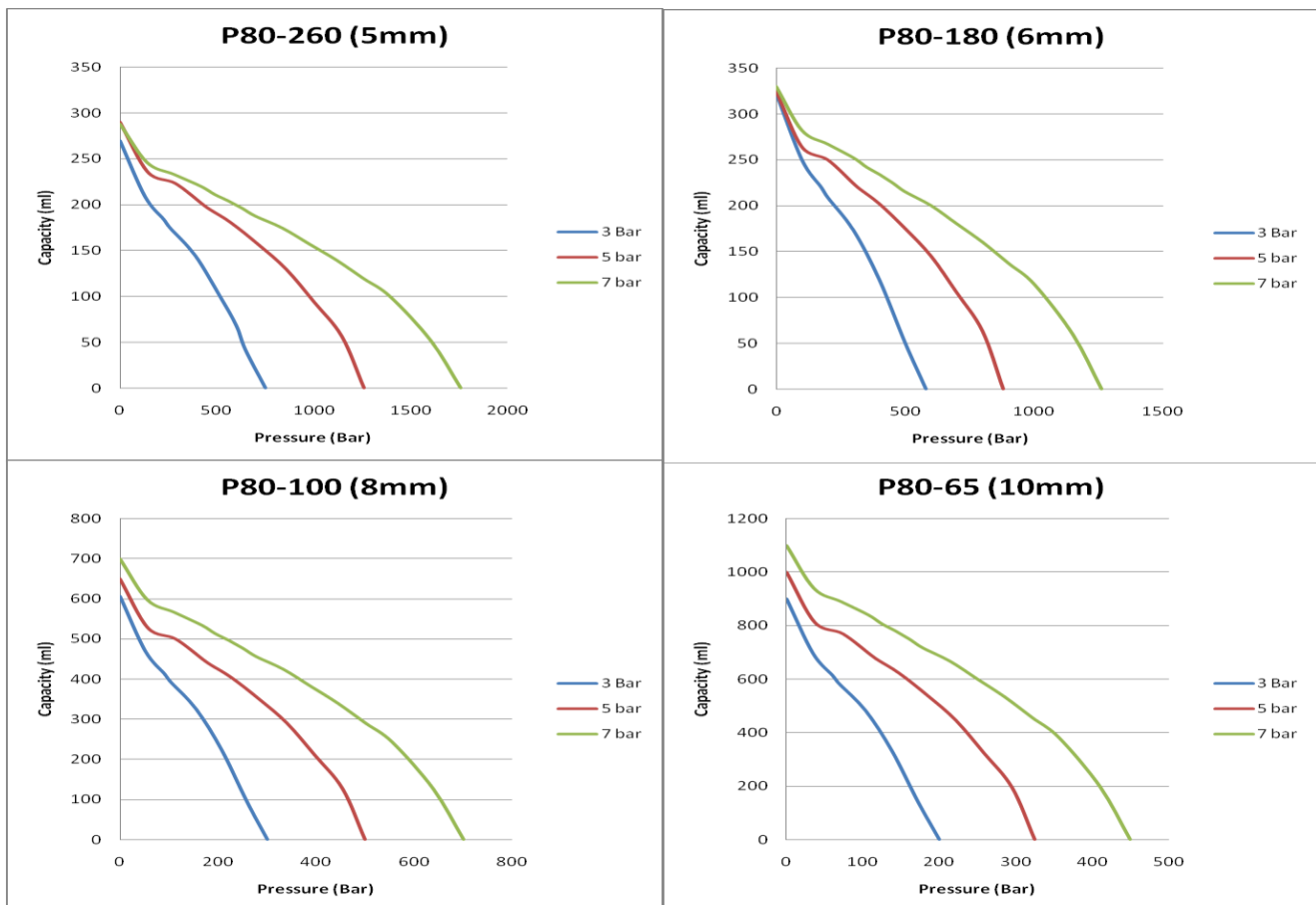
E-mail: [hpsales@resato.com](mailto:hpsales@resato.com)  
Internet: [www.resato.com](http://www.resato.com)

Please note that general data and specifications given in this brochure are subject to change without notice.  
Feel free to contact our sales department if you need more definite information.

## Type table & flow curves Resato P80 series

P80 Pump type	Max. outlet Actual ratio	Volume pressure bar/psi	Max. per cycle cc	Flow l/min	Connections	
					Suction	Discharge
P80-65-1/U/N	65	455 / 6600	1.57	1.10	3/8" BSP	M16x1.5*
P80-100-1/U/N	100	700 / 10150	1.01	0.70	3/8" BSP	M16x1.5*
P80-180-1/U/N	180	1260 / 18275	0.57	0.33	3/8" BSP	M16x1.5*
P80-260-1/U/N	260	1820 / 26400	0.39	0.29	3/8" BSP	M16x1.5*

\* High-pressure connections with conical sealing.



### RESATO INTERNATIONAL BV

1e Energieweg 13  
P.O. Box 30

NL-9301 LK  
NL-9300 AA

Roden – Holland  
Roden - Holland

Phone: +31 (0) 50 501 6877  
Fax: +31 (0) 50 501 2402

E-mail: [hpsales@resato.com](mailto:hpsales@resato.com)  
Internet: [www.resato.com](http://www.resato.com)

Please note that general data and specifications given in this brochure are subject to change without notice.

Feel free to contact our sales department if you need more definite information.

080814